







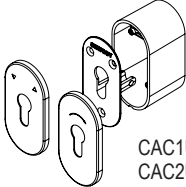
**CAC1M - CAC1MAP - CAC2M - CAC2MAP
CAC1U - CAC1UAP - CAC2U - CAC2UAP**

MAINTENU SUSTAINED DAUERKONTAKT CAC1M - CAC1MAP CAC2M - CAC2MAP					
MAINTENU - IMPULSIONNEL SUSTAINED - MOMENTARY DAUER-MOMENTKONTAKTGABE CAC1U - CAC1UAP CAC2U - CAC2UAP					

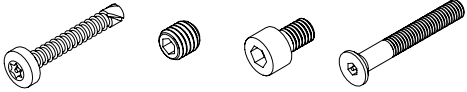
UNIVERSEL - UNIVERSAL



CAC1M - CAC1MAP
CAC2M - CAC2MAP



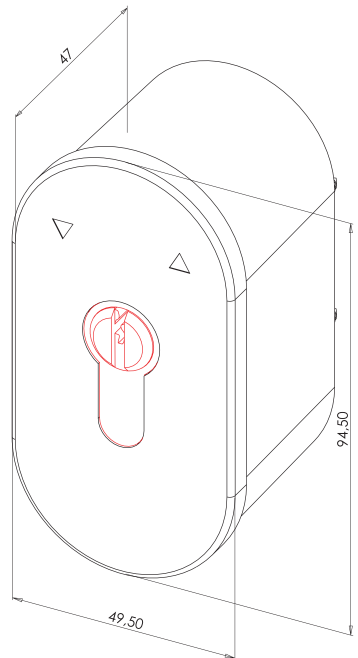
CAC1U - CAC1UAP
CAC2U - CAC2UAP



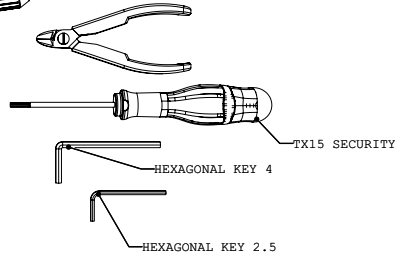
ST 3,5x25 x4 M3 x 3-S x1 M5 x 8 - 8S x1 M4 x 30 x3

RACCORDEMENT CONNECTION ANSCHLUß

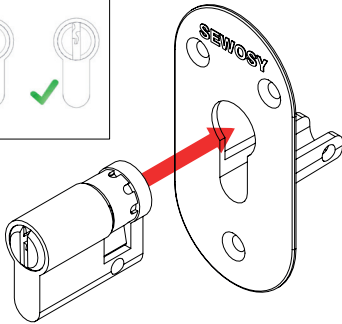
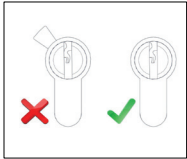
	C	NO	NC
1contact 1 Kontakt	gris grey grau	brun brown braun	bleu blue blau
2 contacts 2 Kontakte	orange	blanc white weiß	noir black schwarz
auto-protection self-protection sabotagekontakt	gris grey grau	brun brown braun	bleu blue blau



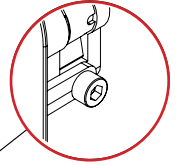
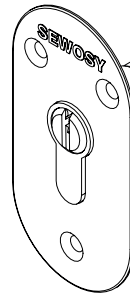
Outillage requis
Required tools
Benötigtes Werkzeug



1



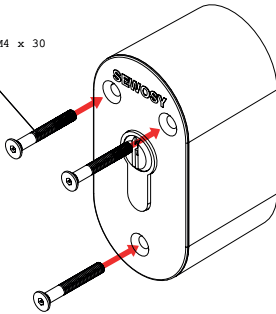
2



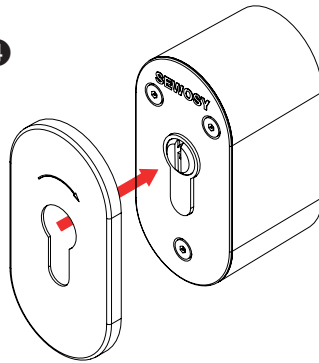
ISO 4762 M5 x 8 --85

3

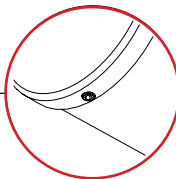
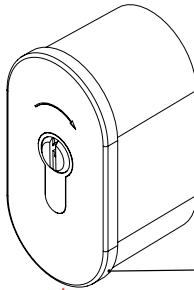
ISO 10642 - M4 x 30



4



5



MONTAGE
MOUNTING
MONTAGE

ISO 4026 - M3 x 3-S

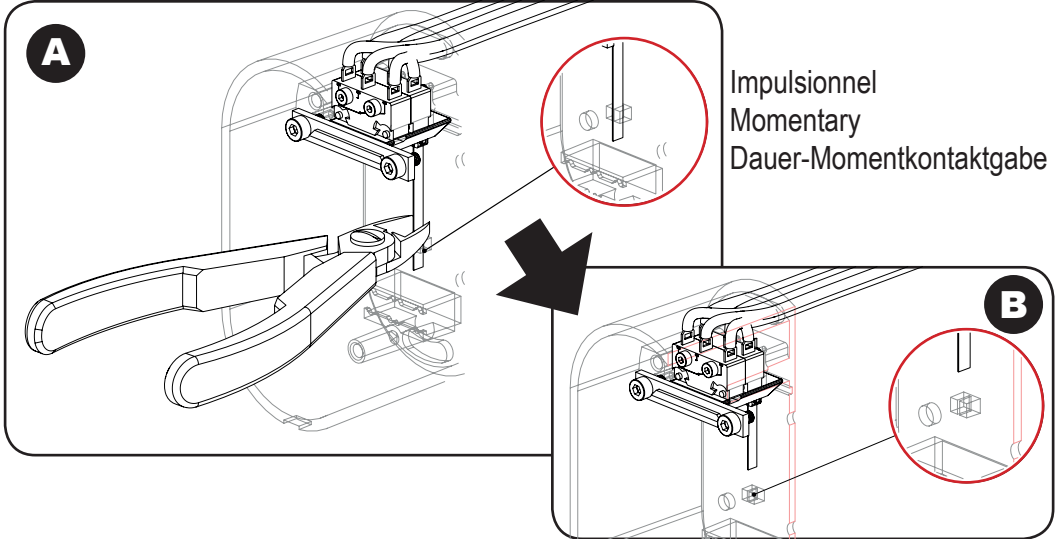
A

Impulsionnel
Momentary
Dauer-Momentkontaktgabe



B

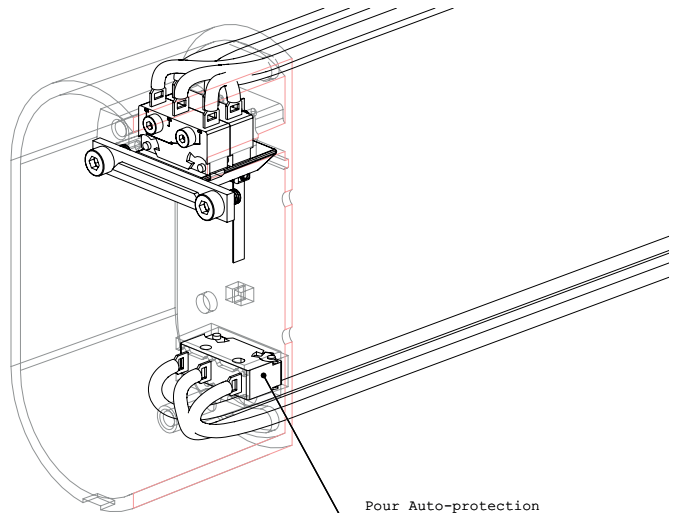
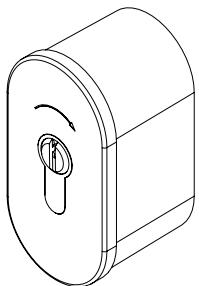
Maintenu
Sustained status
Dauerkontakt



Impulsionnel
Momentary
Dauer-Momentkontaktgabe

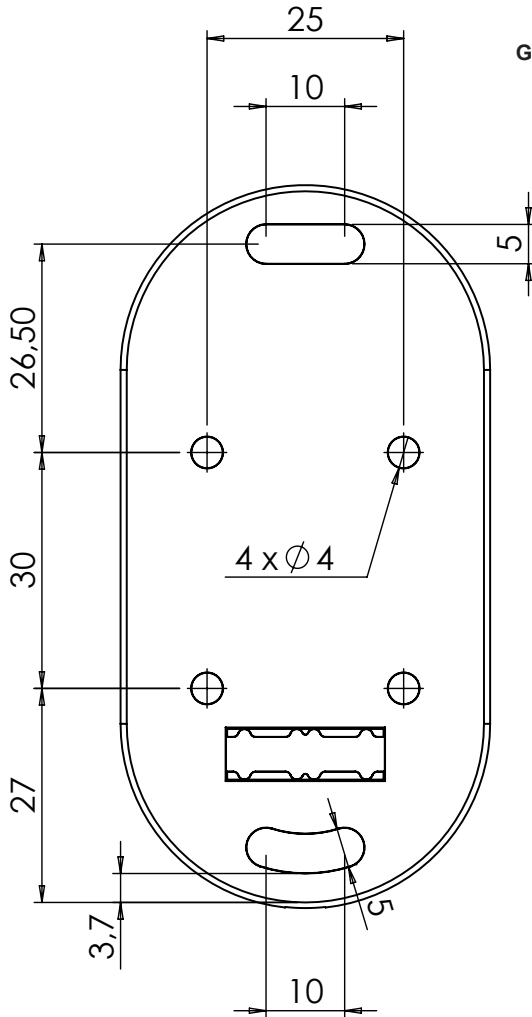
Maintenu
Sustained
Dauerkontakt

**AUTO-PROTECTION
SELF-PROTECTION
SABOTAGEKONTAKT**



Pour Auto-protection
Sabotagekontakt position
Tamper Switch location

GABARIT DE PERCAGE
DRILLING TEMPLATE
BOHRSCHABLONE



130 rue Saint-Eusèbe • ZA de l'Albatros • CS20152 • F-67503 HAGELBAU CEDX • www.sewosy.eu ☎ 33 (0)3 90 59 02 20 📠 33 (0)3 90 59 02 19
Sous réserve de modifications techniques - Technical changes reserved! - Änderungen vorbehalten!



- Utiliser ce matériel uniquement pour une application adaptée.
- Le fabricant n'est pas responsable des dommages éventuels causés par une utilisation contraire aux dispositions de sécurité.
- Le montage, la maintenance et les réparations doivent être réalisés par un personnel spécialisé et autorisé.
- Use this equipment only for an adapted application.
- The manufacturer cannot be held responsible for possible damage caused when usual security requirements are not fulfilled.
- Mounting, maintenance and repair must be carried on by a skilled and authorized staff.
- Dieses Material nur für vorgesehene Anwendungen einsetzen.
- Der Hersteller leistet keine Gewähr für Schäden die durch fehlerhafte Montage oder nicht einhalten von Sicherheitsvorschriften entstehen.
- Die Montage, die Wartung und Reparaturen dürfen nur durch sachkundiges Personal durchgeführt werden.